

# **Trimester 3**

## **Introduction**

I know about color:

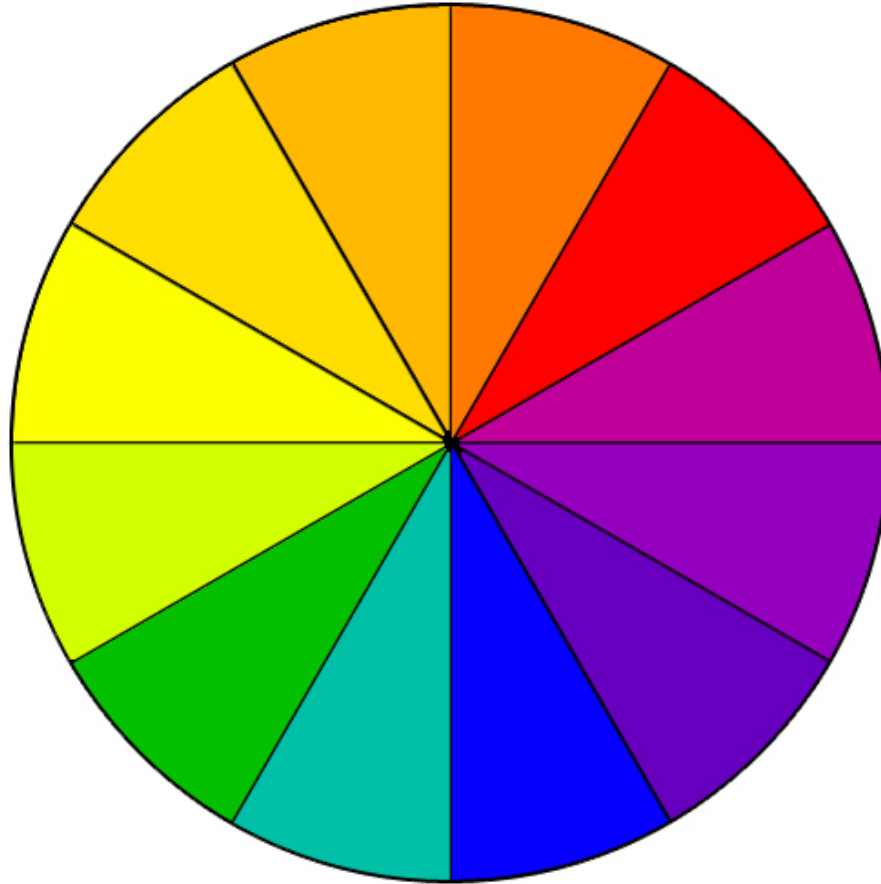
- primary
- secondary
- complementary
- intermediate
- warm
- cool
- can create moods

# Color



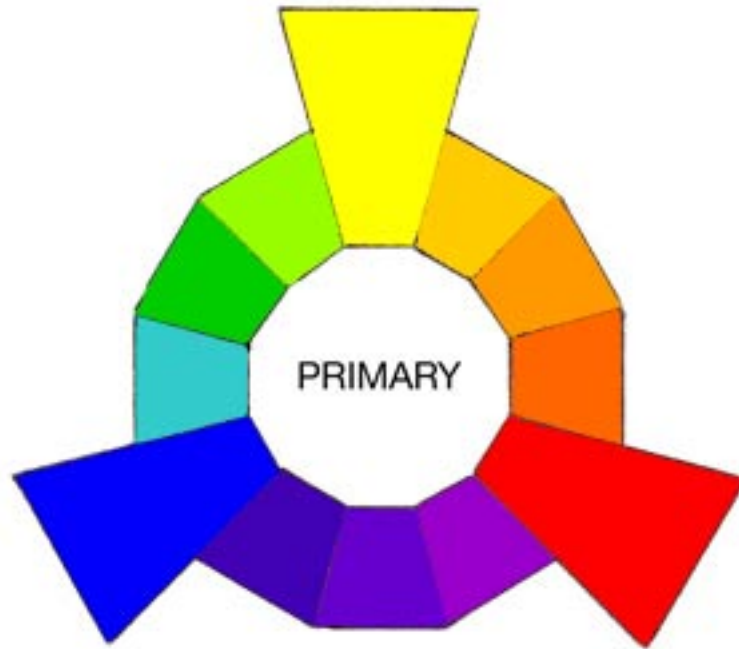
# Color

In the study of color,  
colors are arranged on a color wheel.

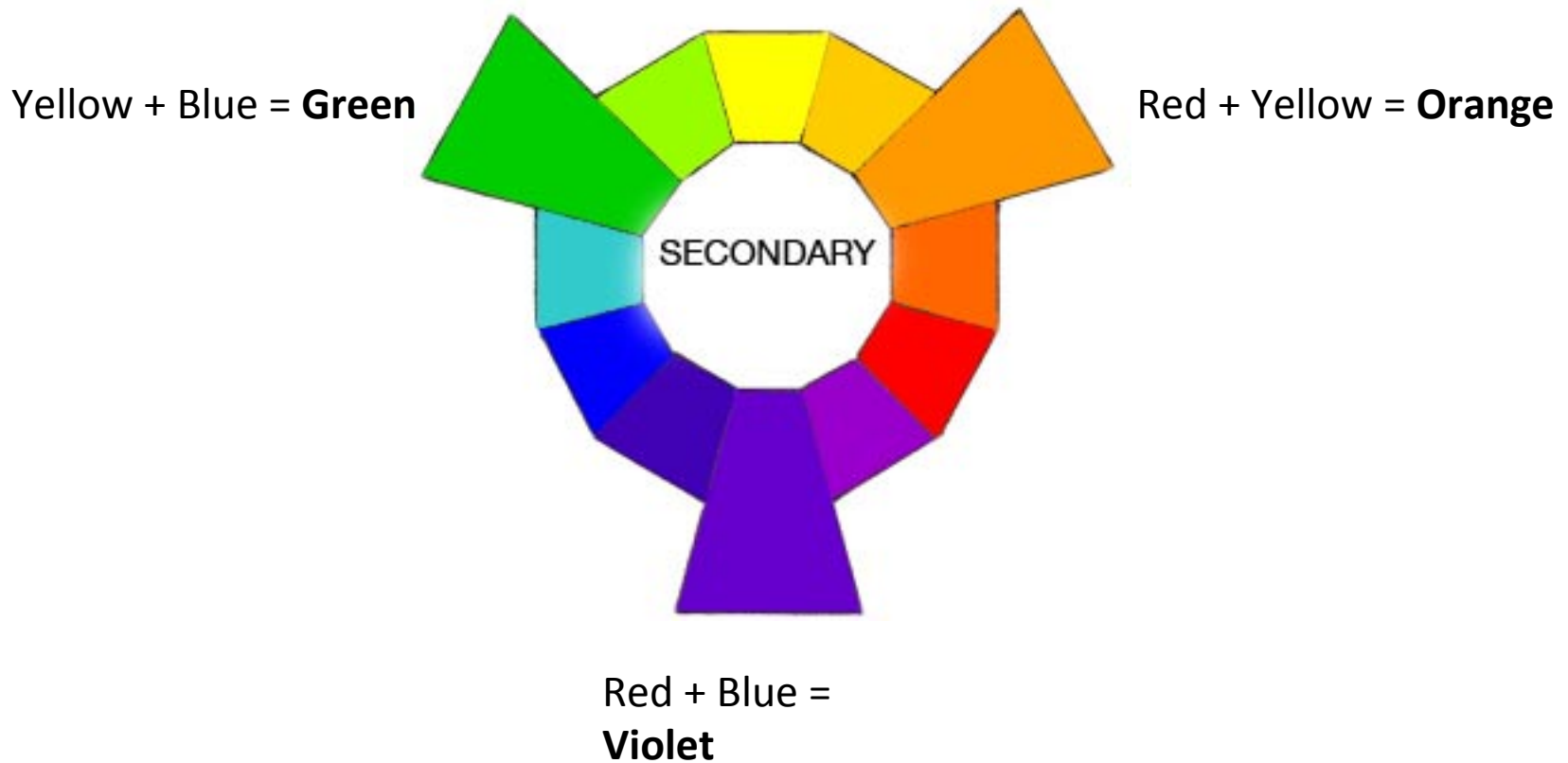




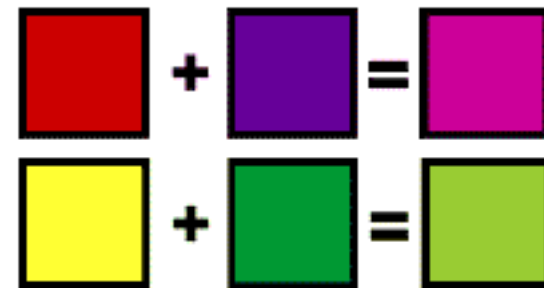
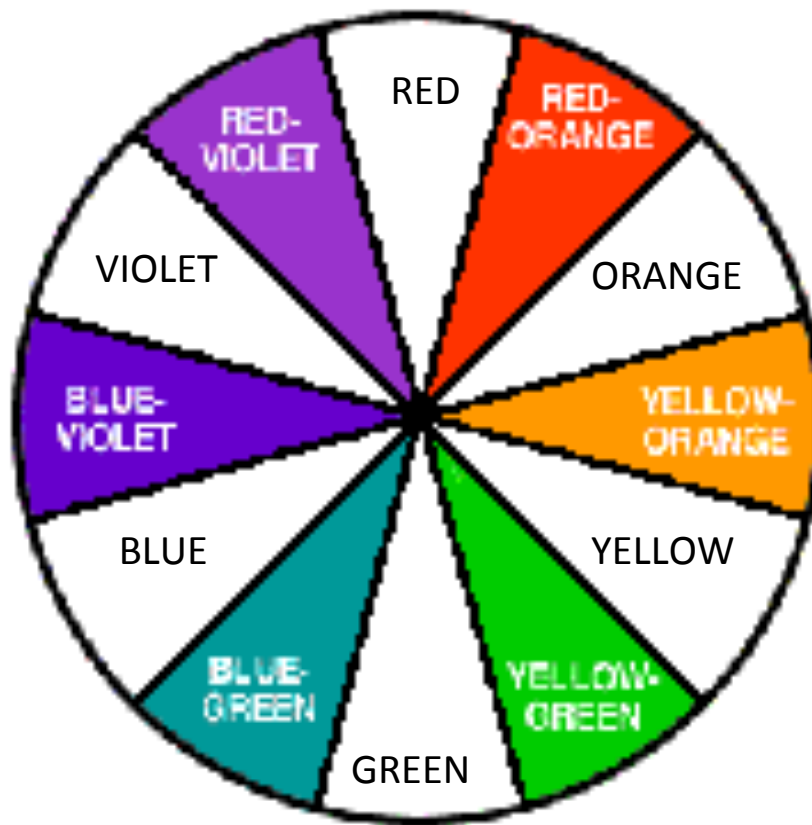
These colors are called the **primary** colors. They are called primary because they are not derived from any other colors.



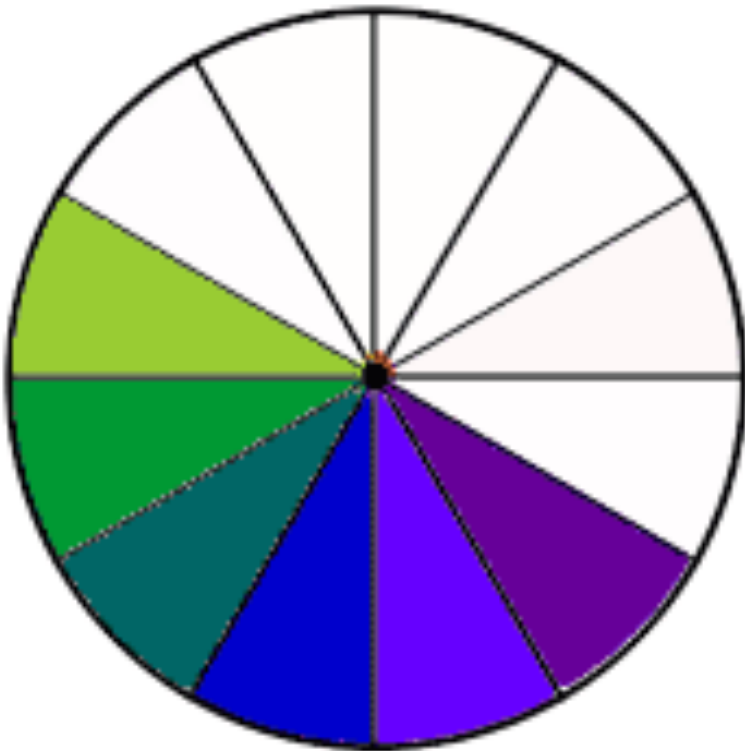
These colors are called secondary colors. They are created by mixing equal parts of the two primary colors



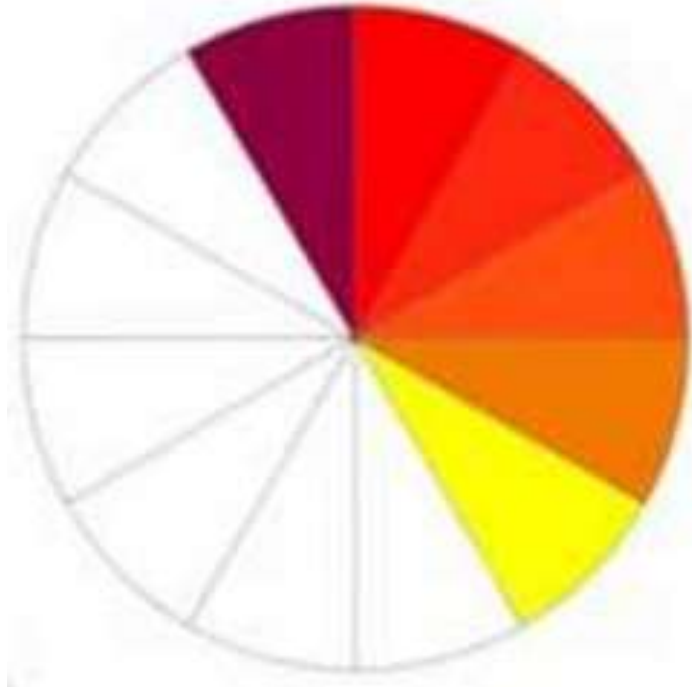
This group of colors are called intermediate. They are created by mixing a primary color with a secondary.



Cool colors remind us of cool things such as water or walking on green grass with bare feet.



Warm colors remind us of warm things such as the sun or a fire.



Color can help create a mood.



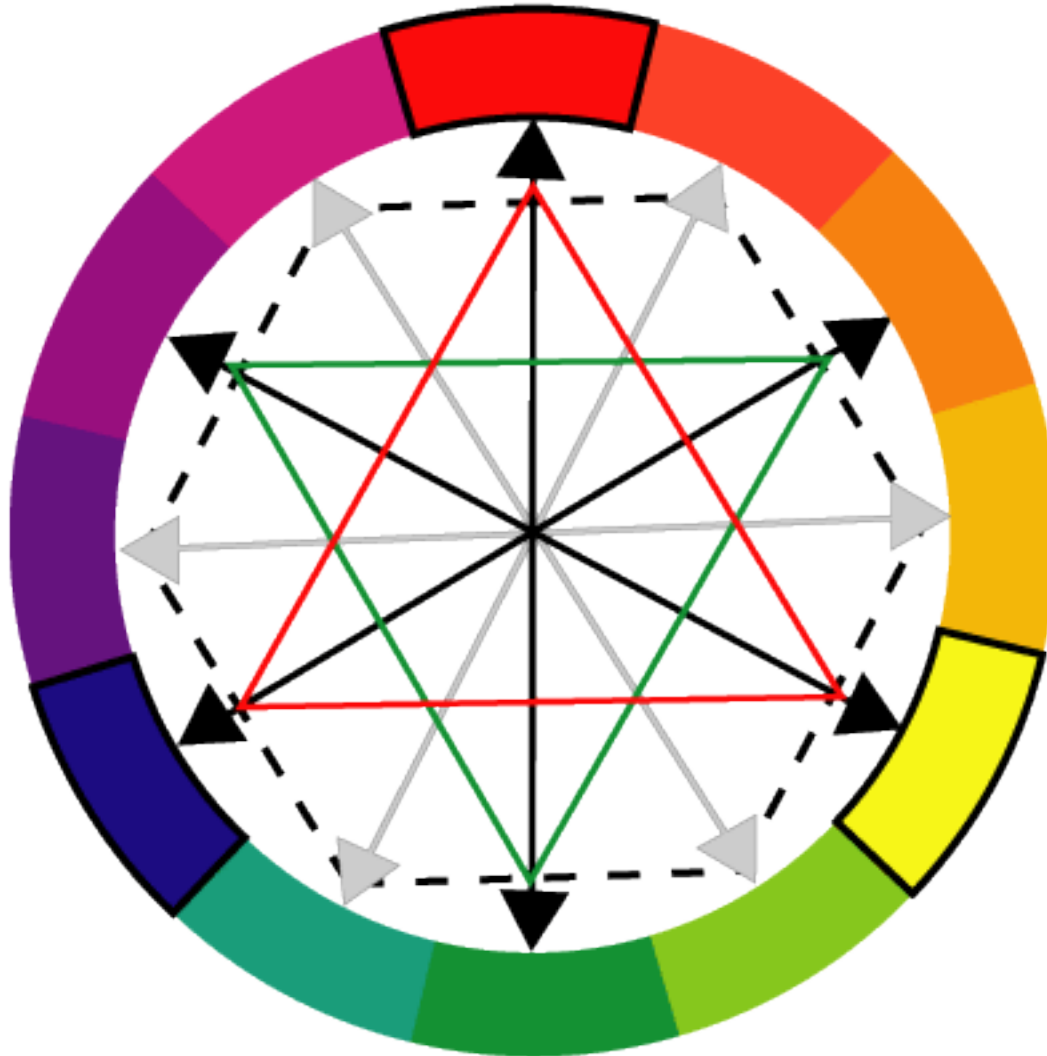
What mood do you think the artist is trying to create?



What mood do you think the artist is trying to create?



Complimentary colors are colors opposite on the color wheel.





Here are examples of paintings done with complementary pairs.



# Space



I know about space:  
positive and negative

# The three stools show you:



**REAL**



**POSITIVE**



**NEGATIVE**

The chair shows you how positive and negative can be used by an artist.



Can you identify the positive and negative in this necklace?







Negative and Positive  
What do you see?

I know how artists create the illusion of space.

- overlapping
- placement
- size
- horizon line
- vanishing point



Overlapping is a trick used to create the illusion of space.



Placement and size is used to create the illusion of space.  
Up/small=far away. Down/large=close.





# Horizon Line

The visual line where sky meets water or land.





# Vanishing Point

A point on the horizon line where diagonal lines seem to disappear .



I know steps for creative problem solving.

- Think!
- Plan!
- Do!

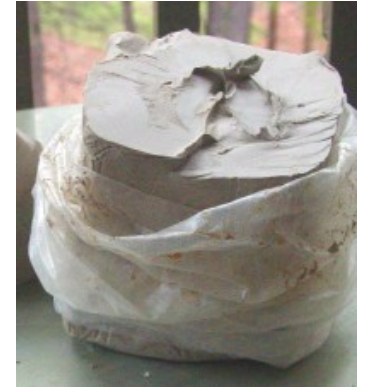




The next important step is to sketch a plan.



Another important part of problem-solving for an art project is determining the best materials and tools to use.





# CREATE



Problem-solving is a life skill used by successful people.



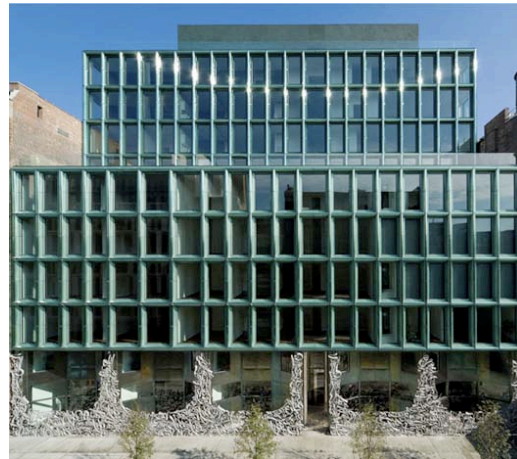
I know that art technology  
changes over time.

Throughout the history of humans, **visual** ways have been discovered to **communicate** symbols, words, and images.



From drawing with burnt sticks to drawing on computers, techniques, tools and materials have evolved over time. Each new evolution **has built on the current understanding.**





Evolving technology impacts architecture.